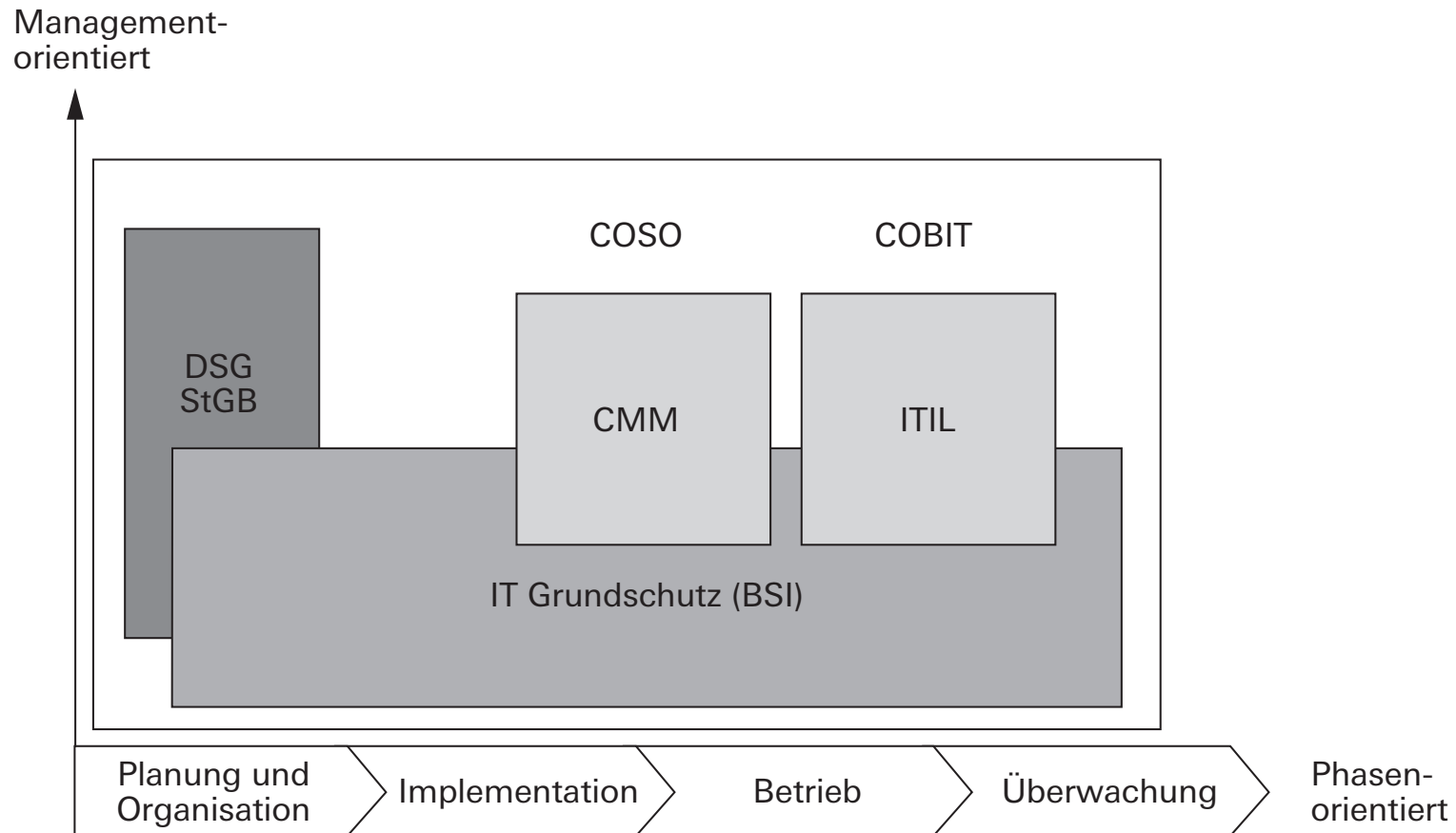
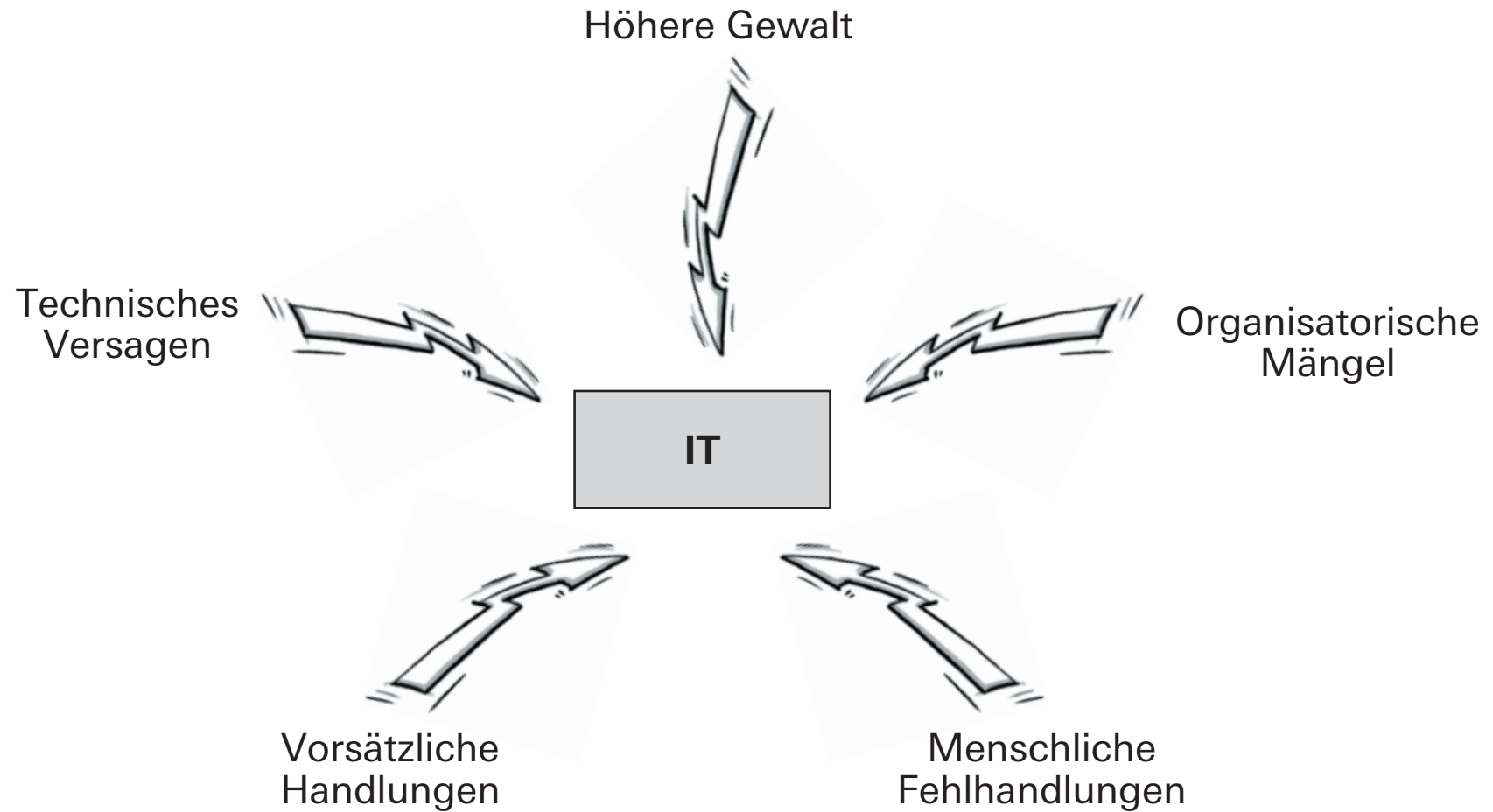


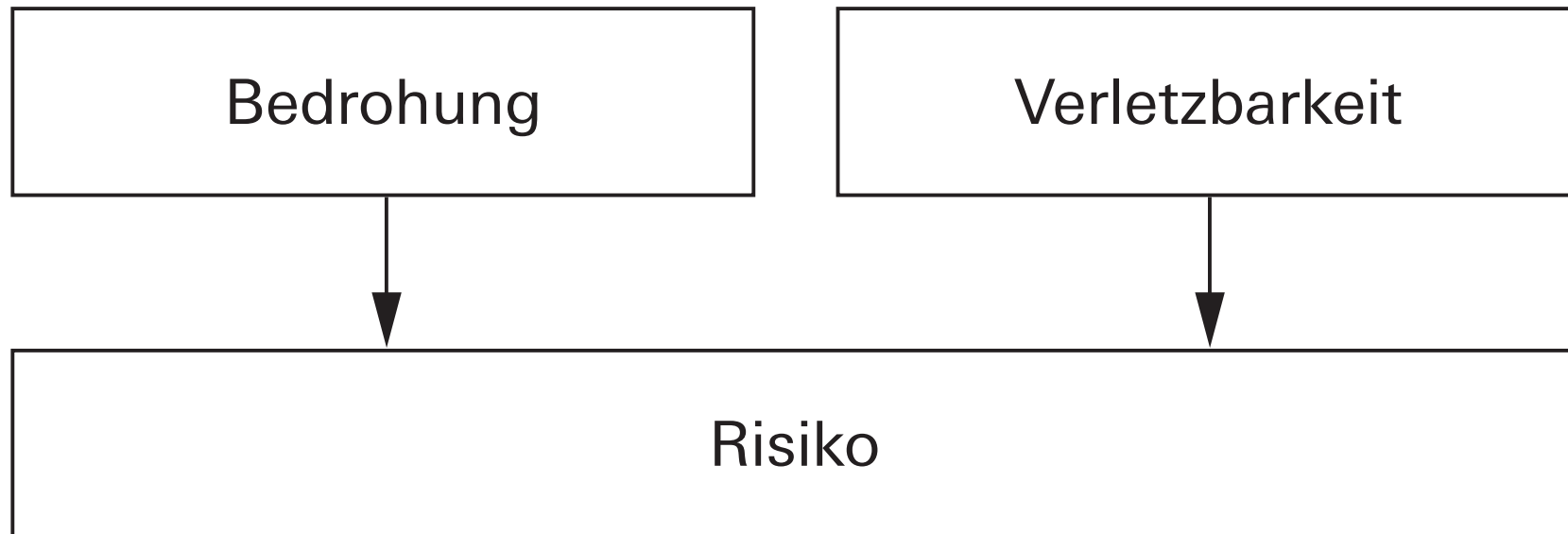
Information Systems
Audit and Control
Association®

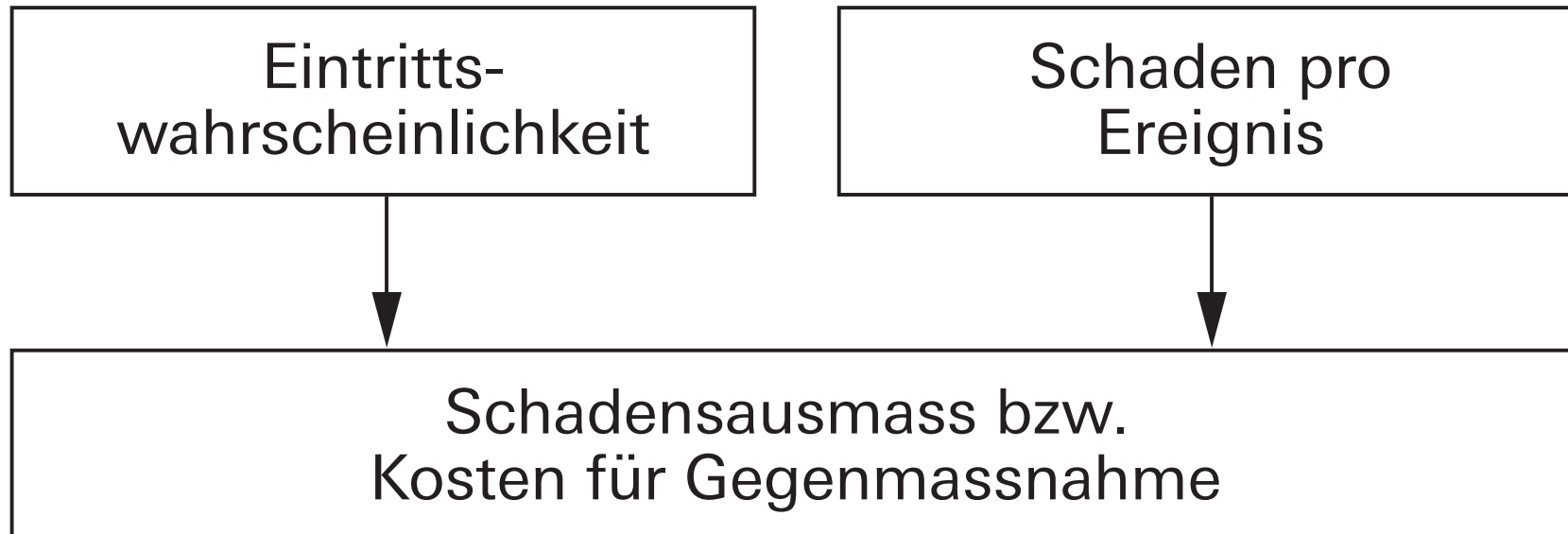


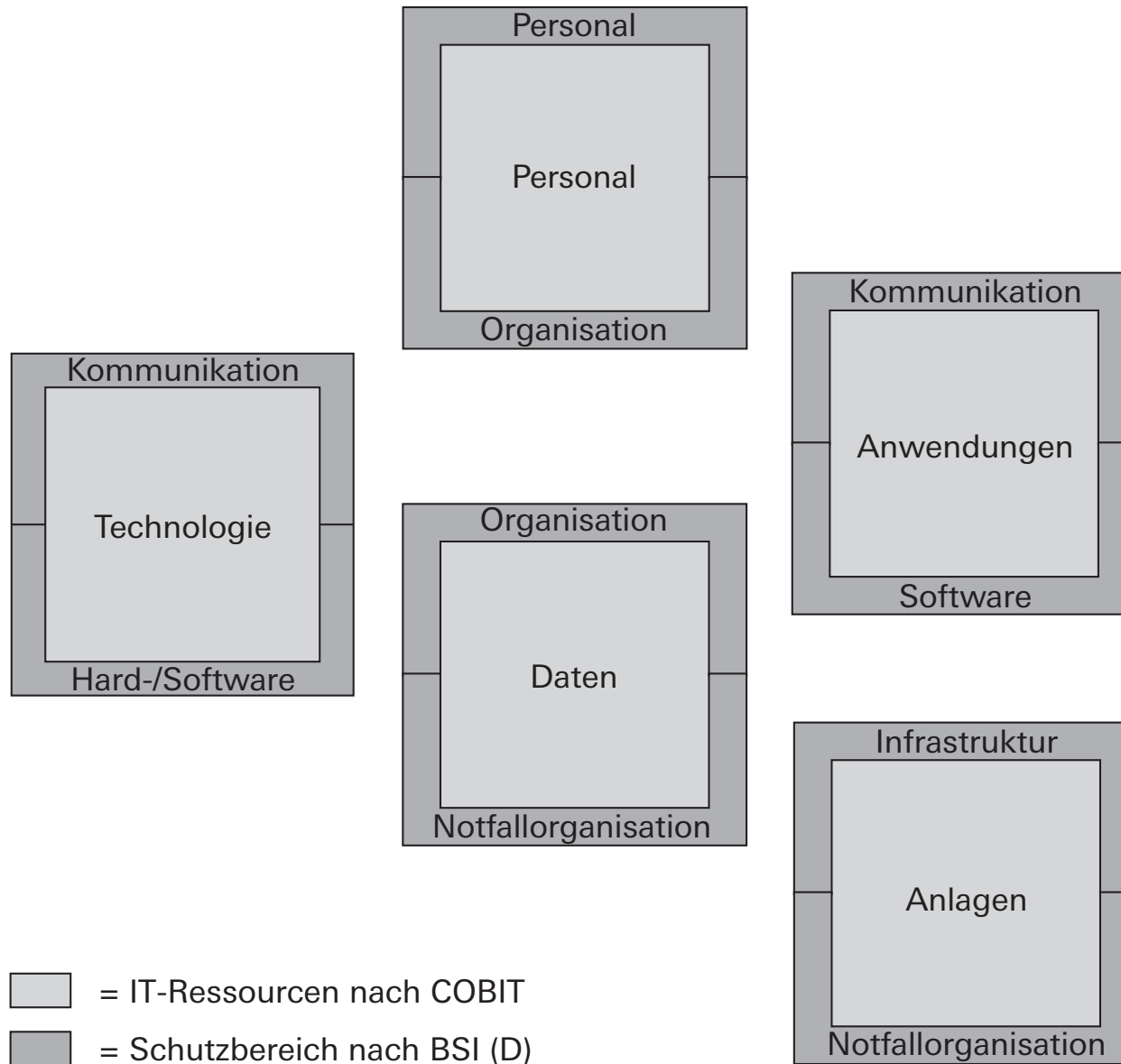
Legende:

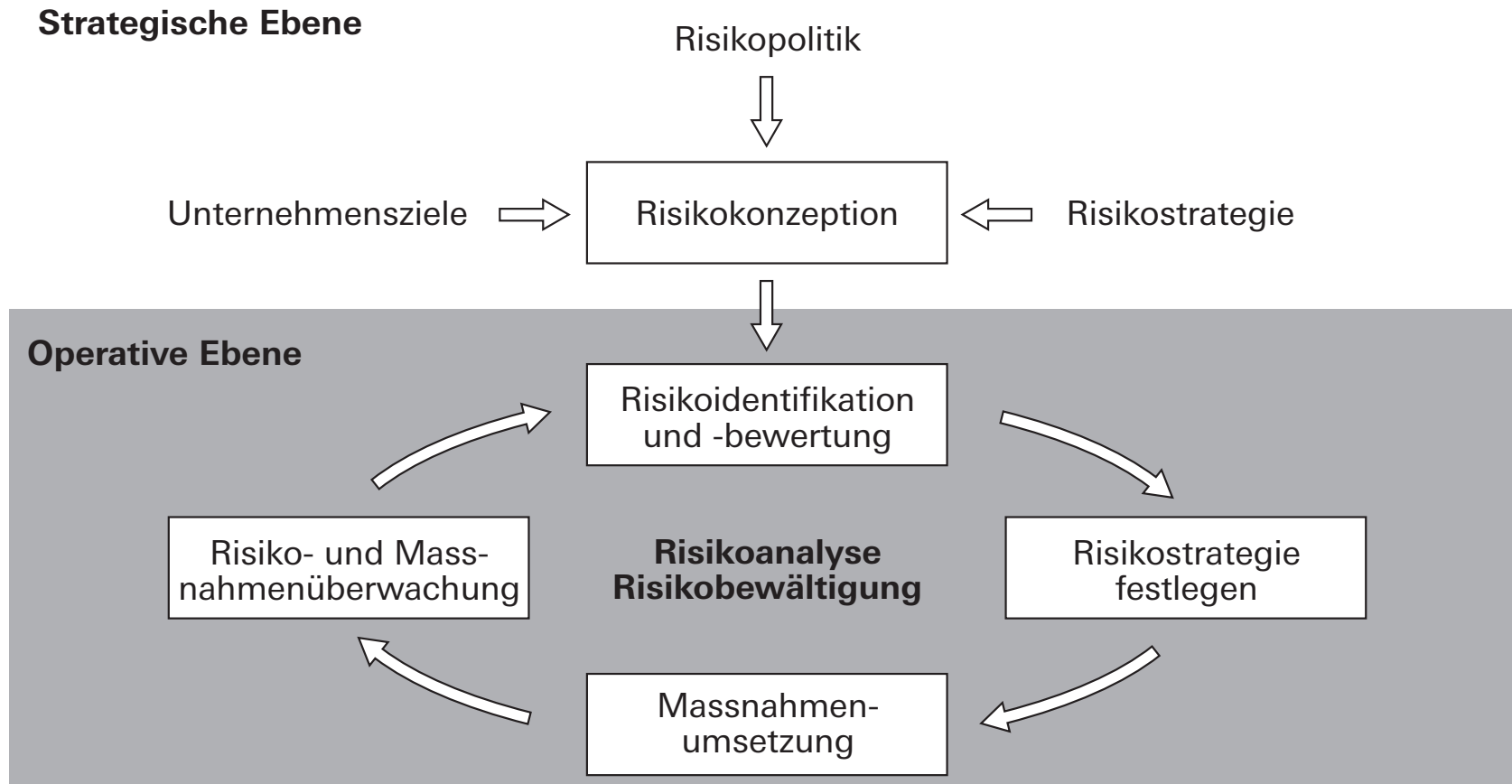
- COSO = Committee of Sponsoring Organisations of the Tradeway Commission
- COBIT = Control Objectives for Information and related Technology
- DSG = Datenschutzgesetz
- StGB = Strafgesetzbuch
- CMM = Capability Maturity Model
- ITIL = IT Infrastructure Library

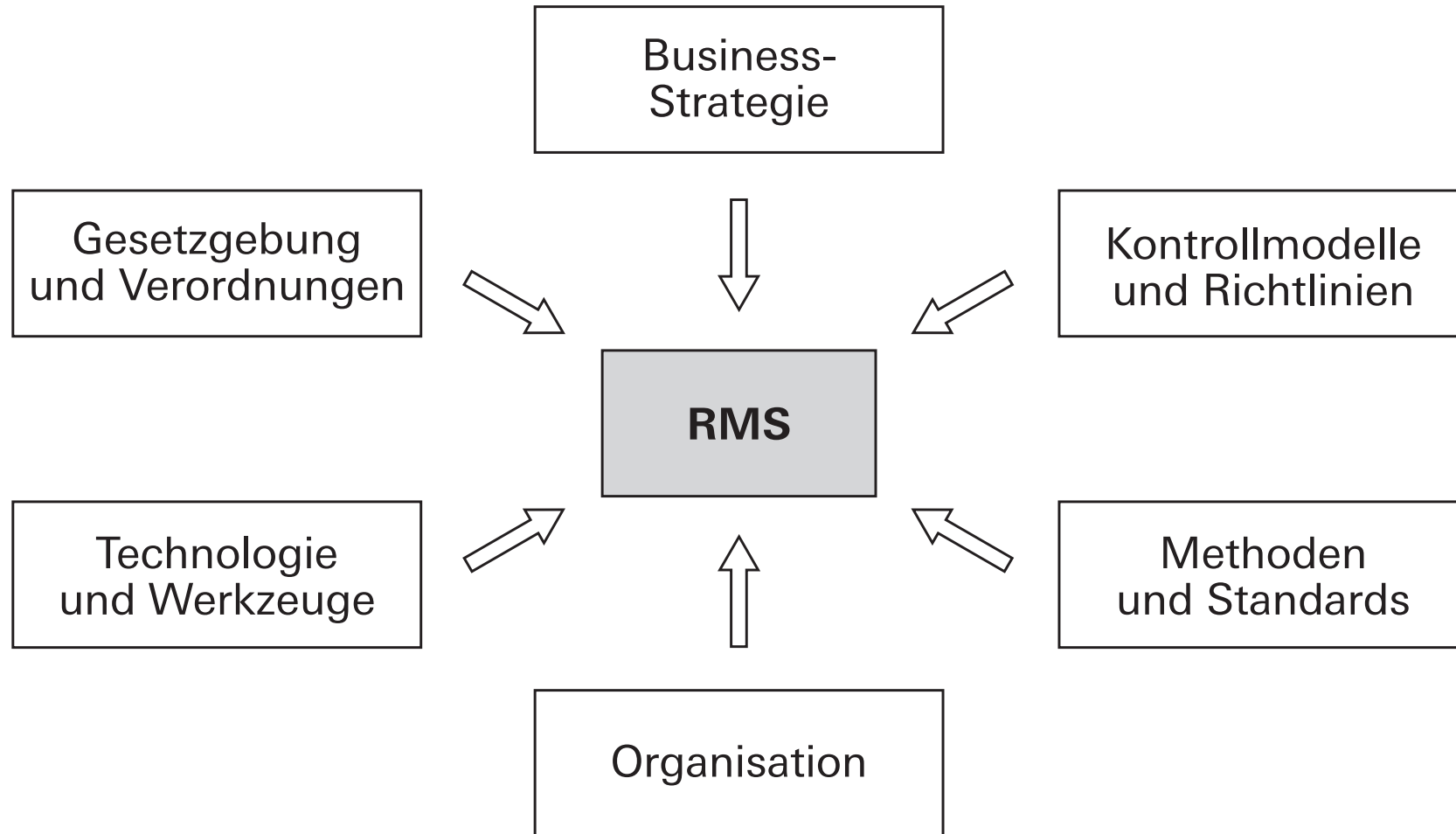


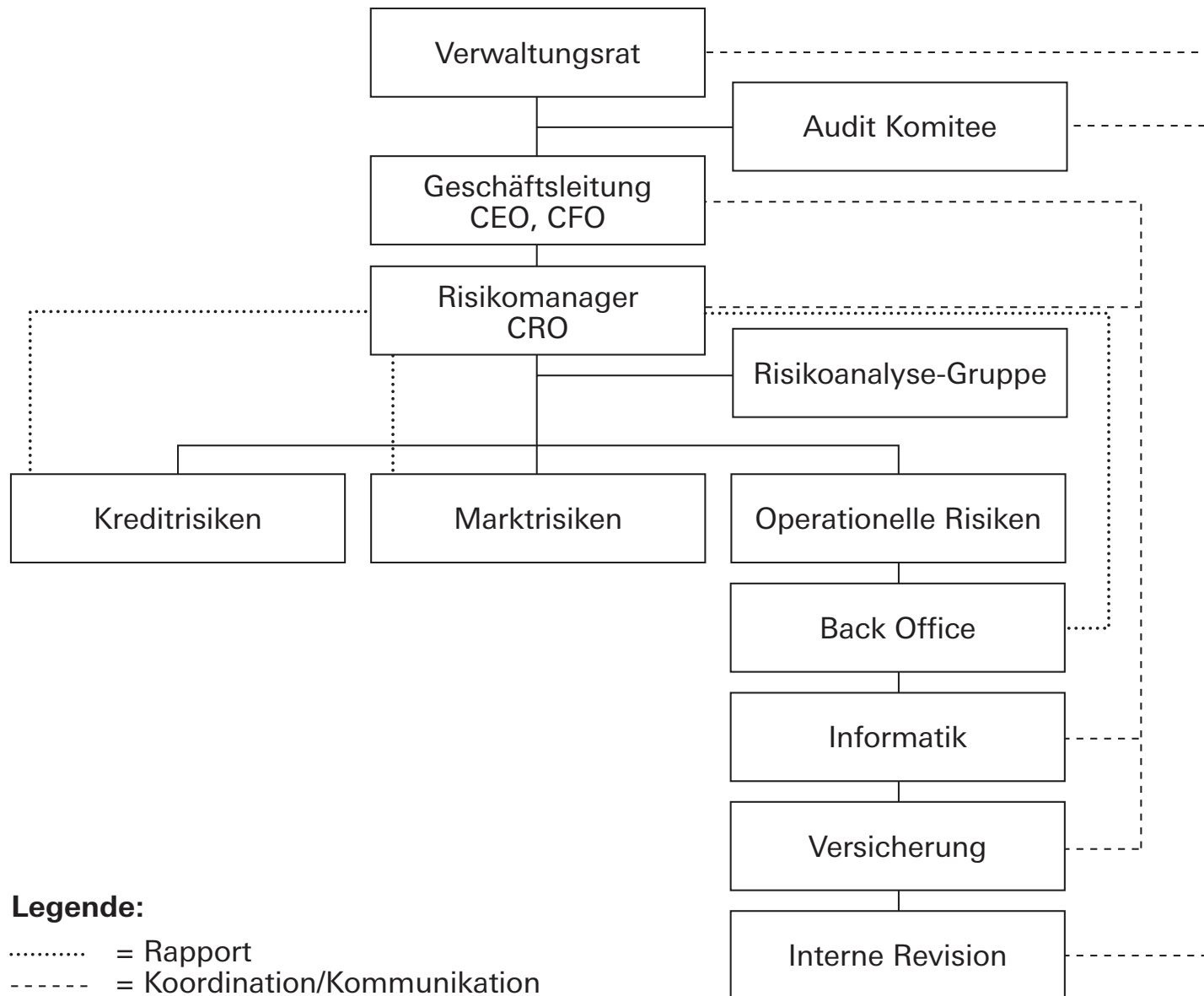


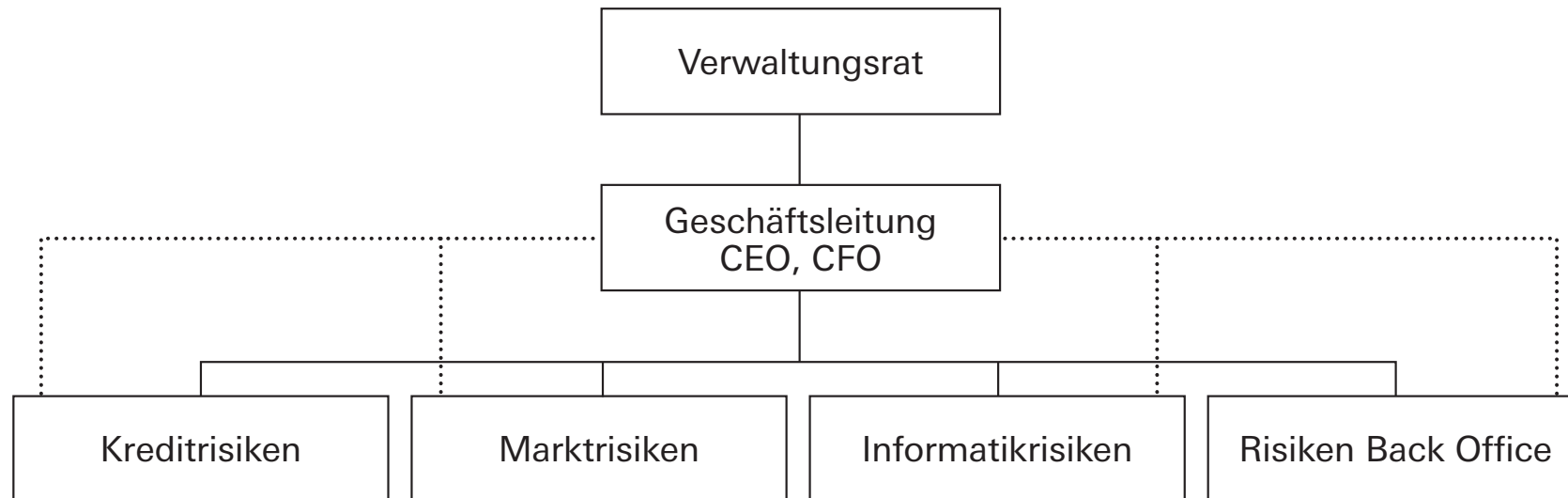






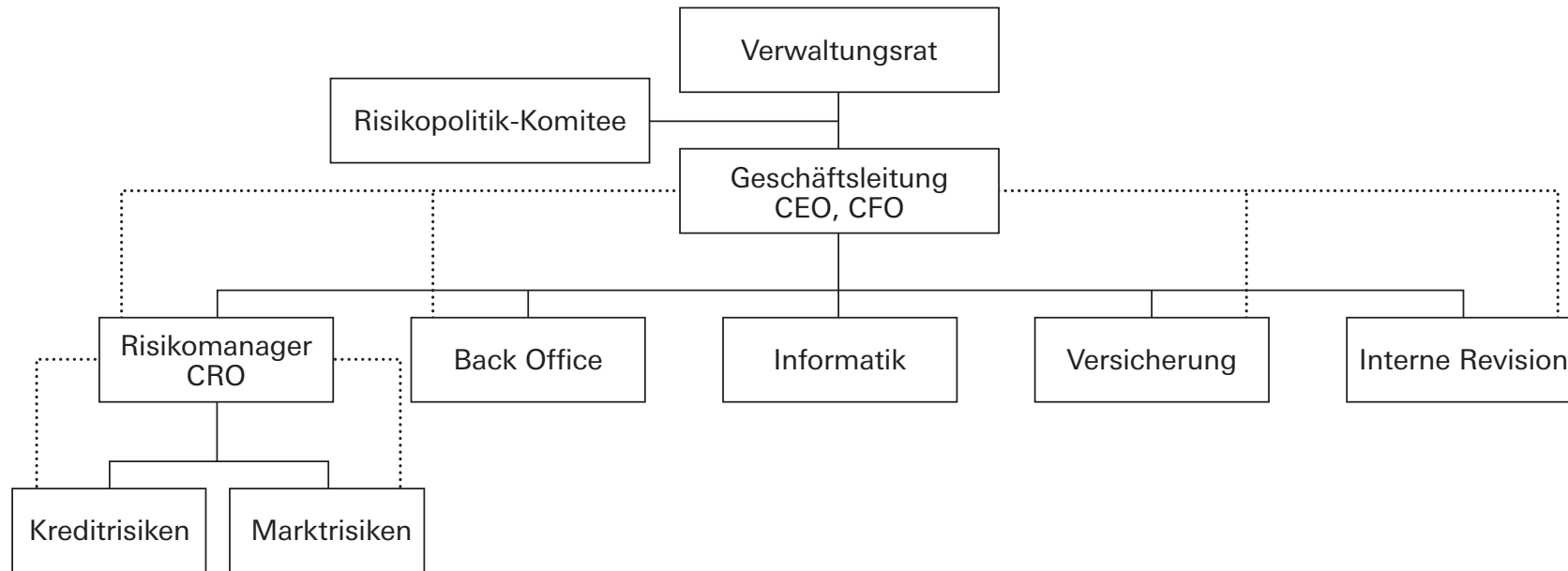






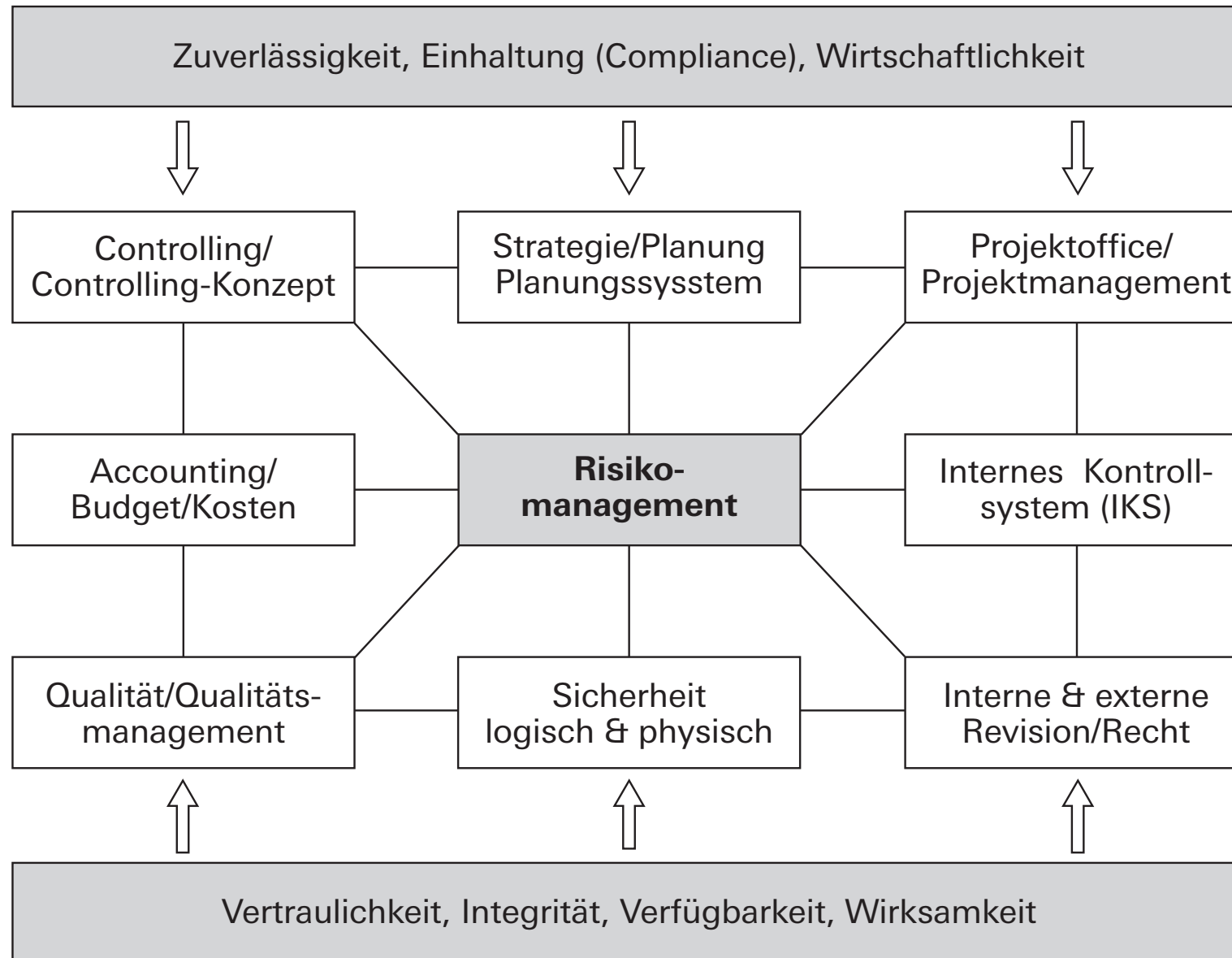
Legende:

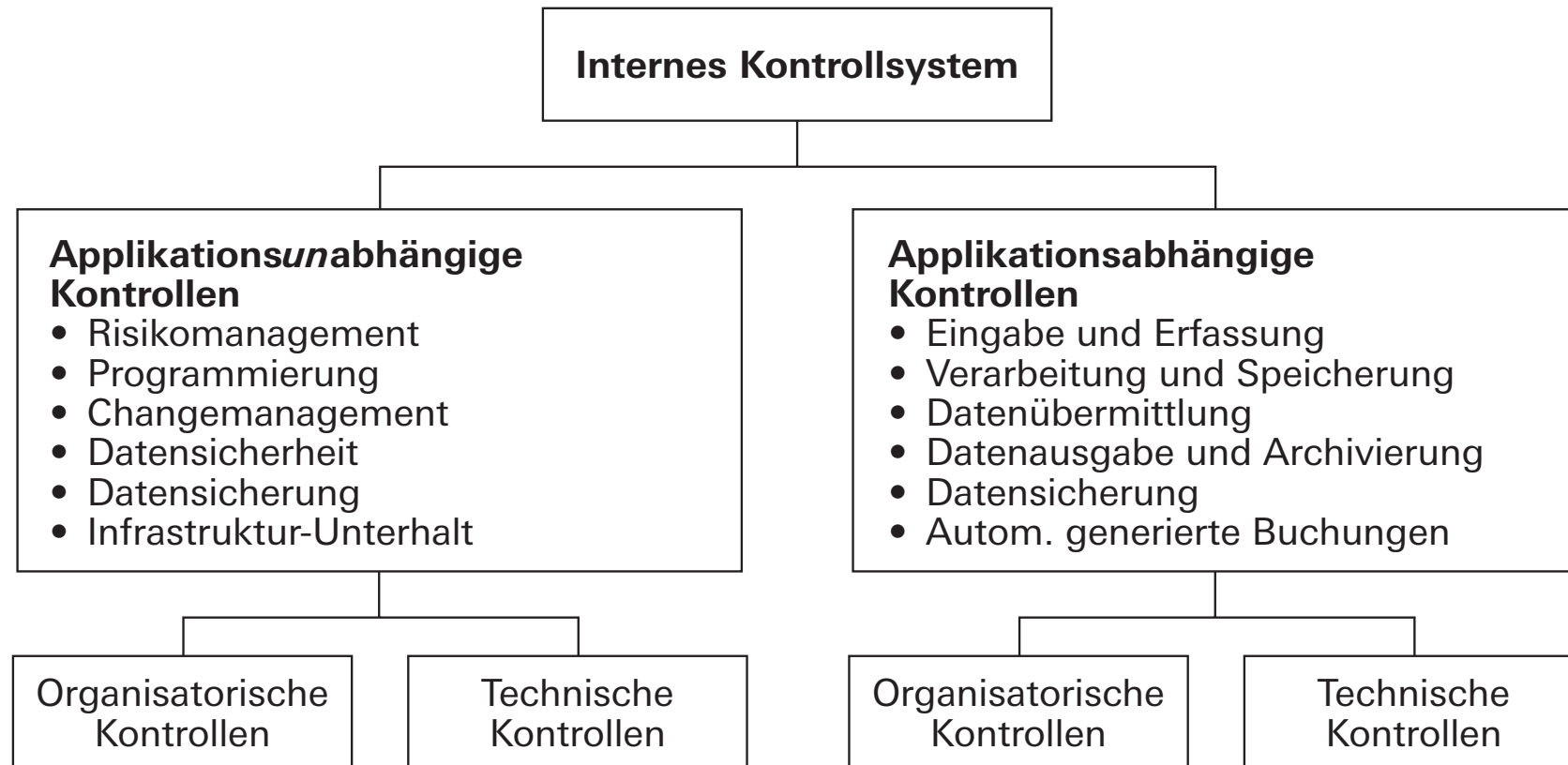
..... = Rapport

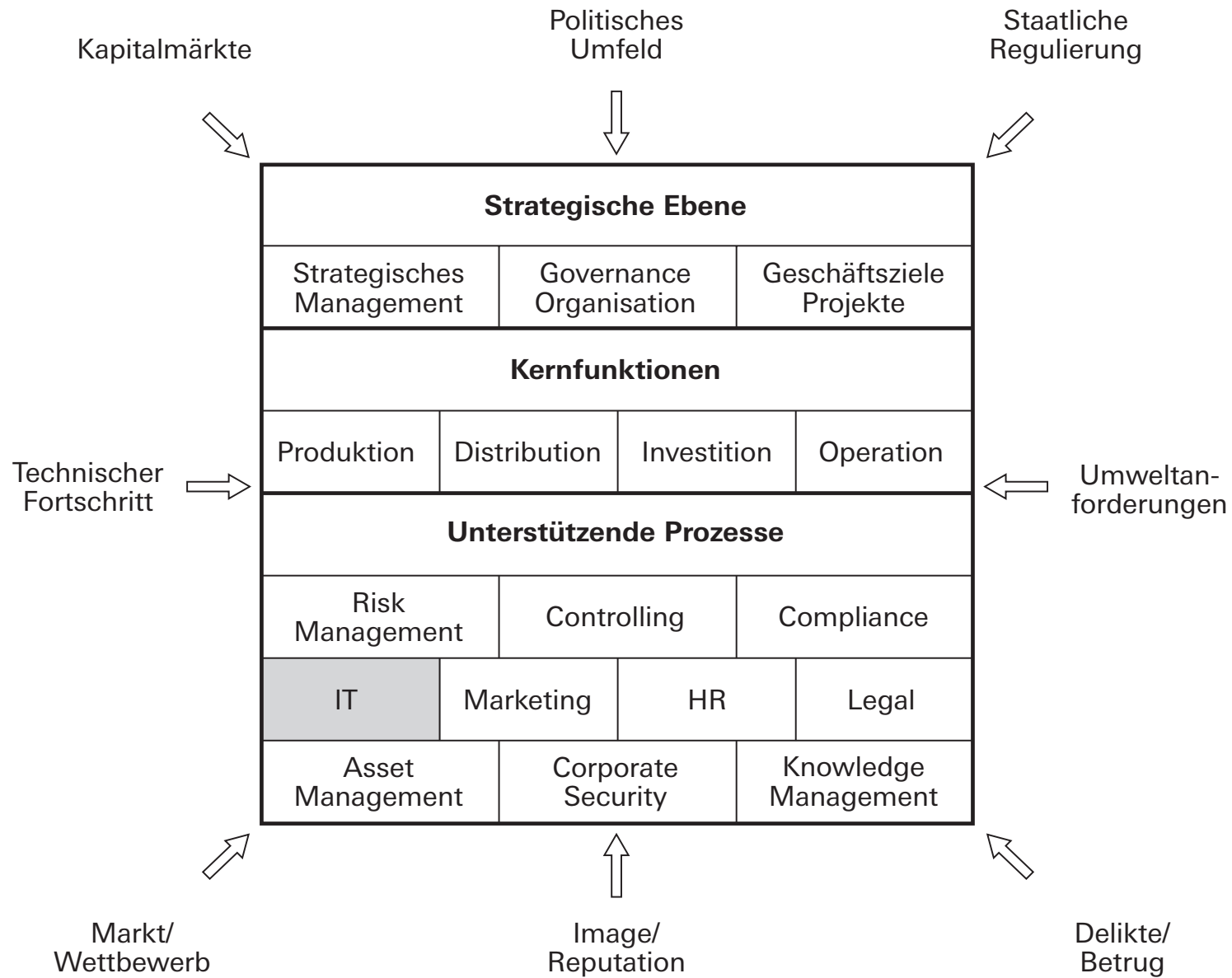


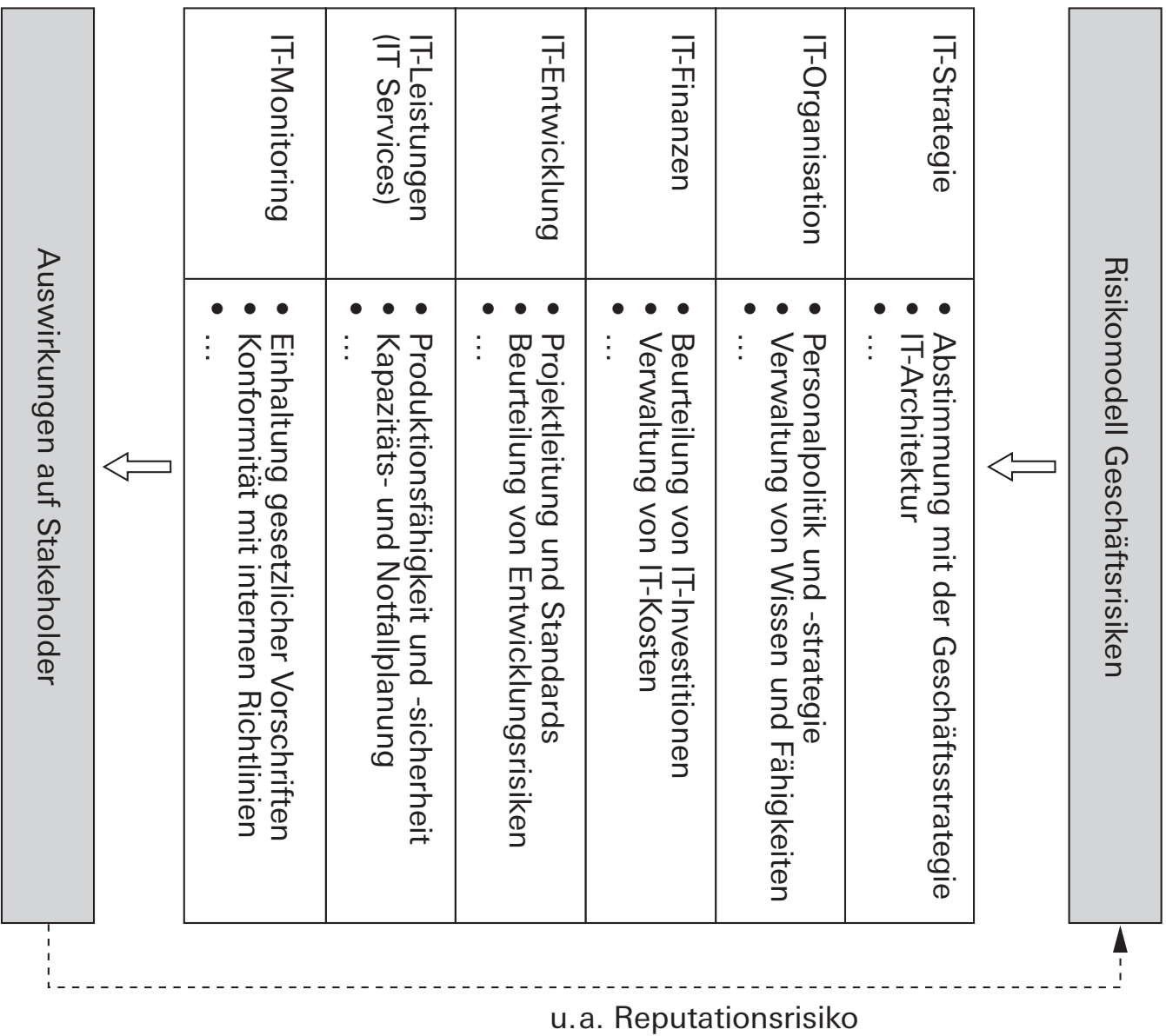
Legende:

..... = Rapport









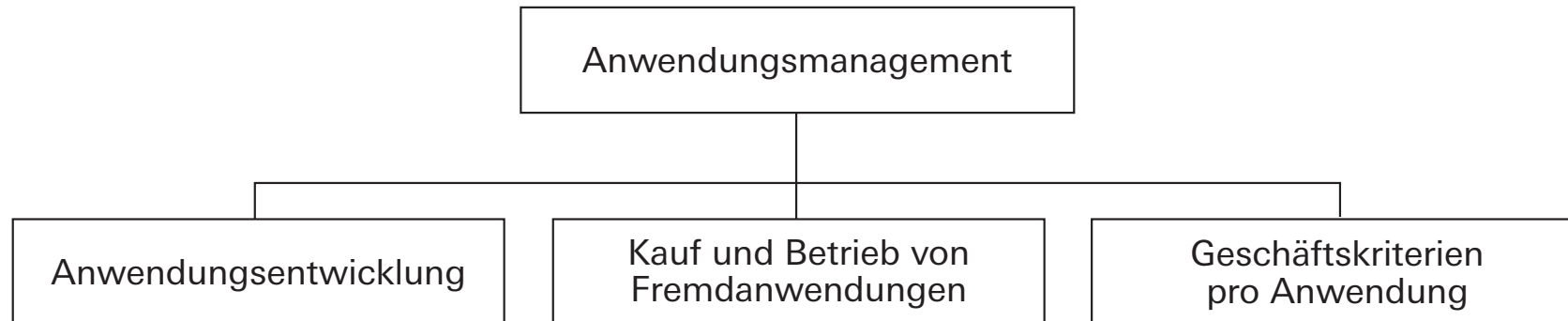
Aufgaben einer IT-Abteilung

Service-Management

Projektmanagement

Konfigurationsmanagement

Anwendungsmanagement



Vorbereitung

Risikoanalyse initiieren



Untersuchungsbereich ab- und eingrenzen



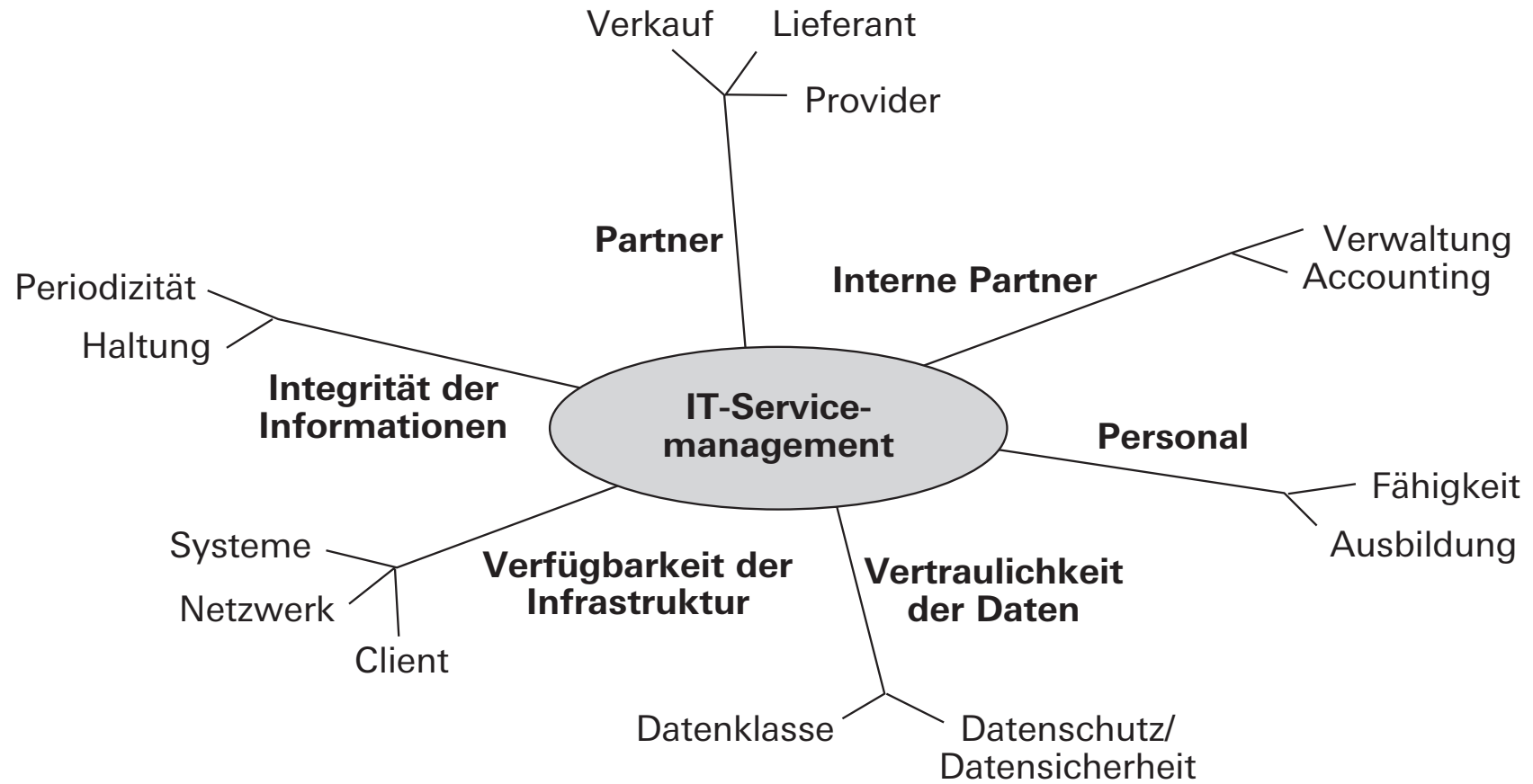
Durchführung

Risiken identifizieren

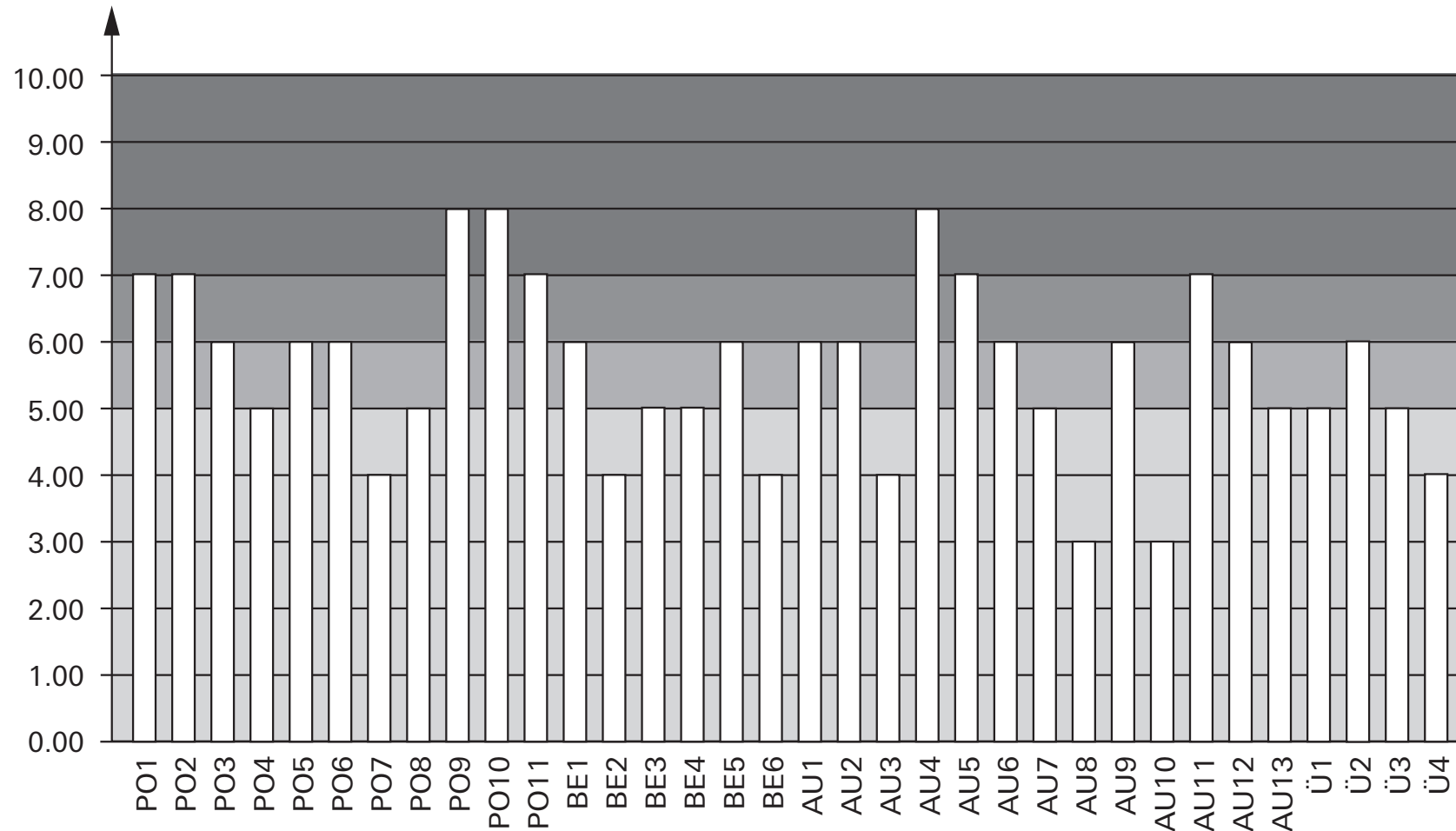


Risiken bewerten



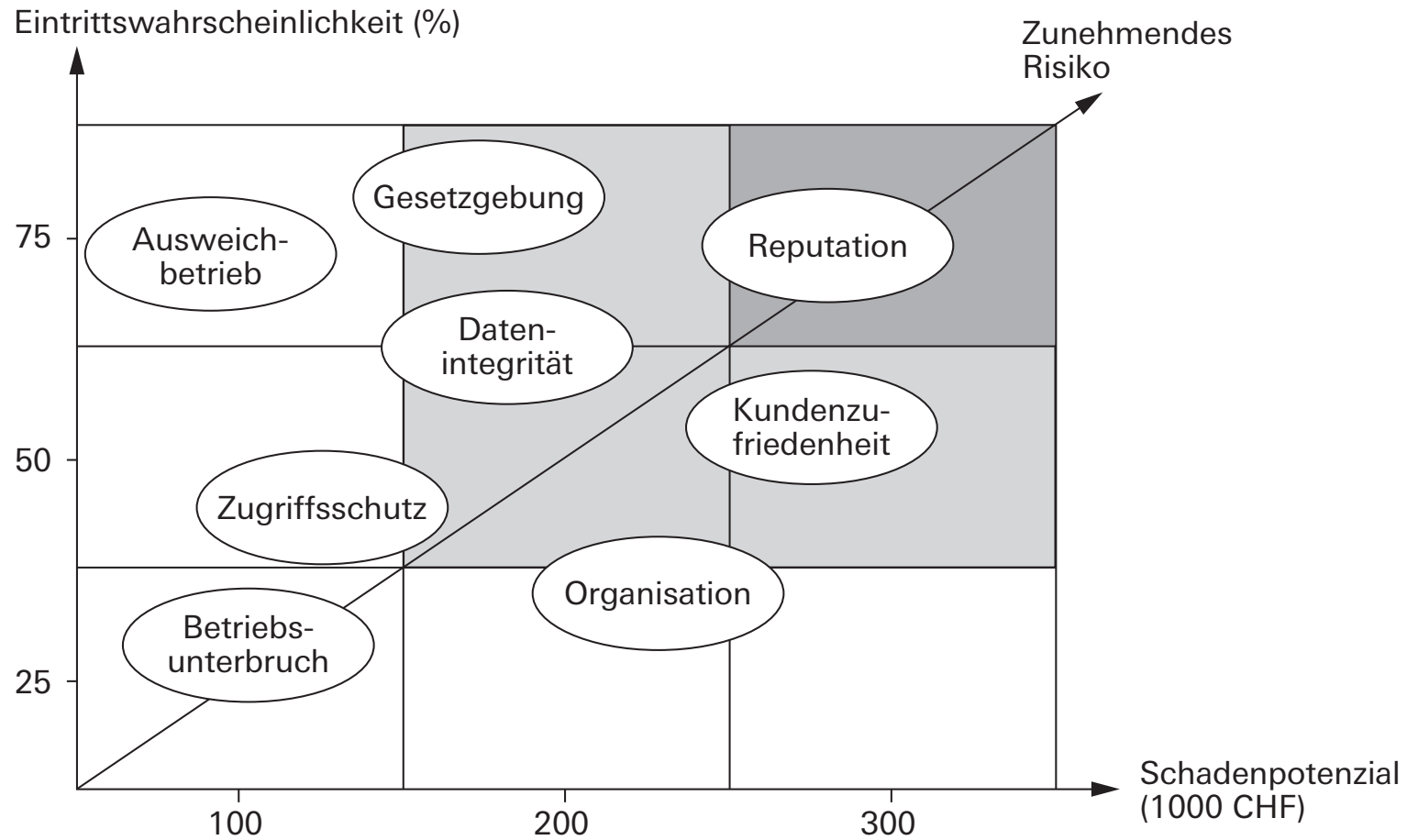


Risiko-Nummer	1	2	3	4	5	6
1						
2			X		X	
3		X				
4					X	
5		X		X		
6						



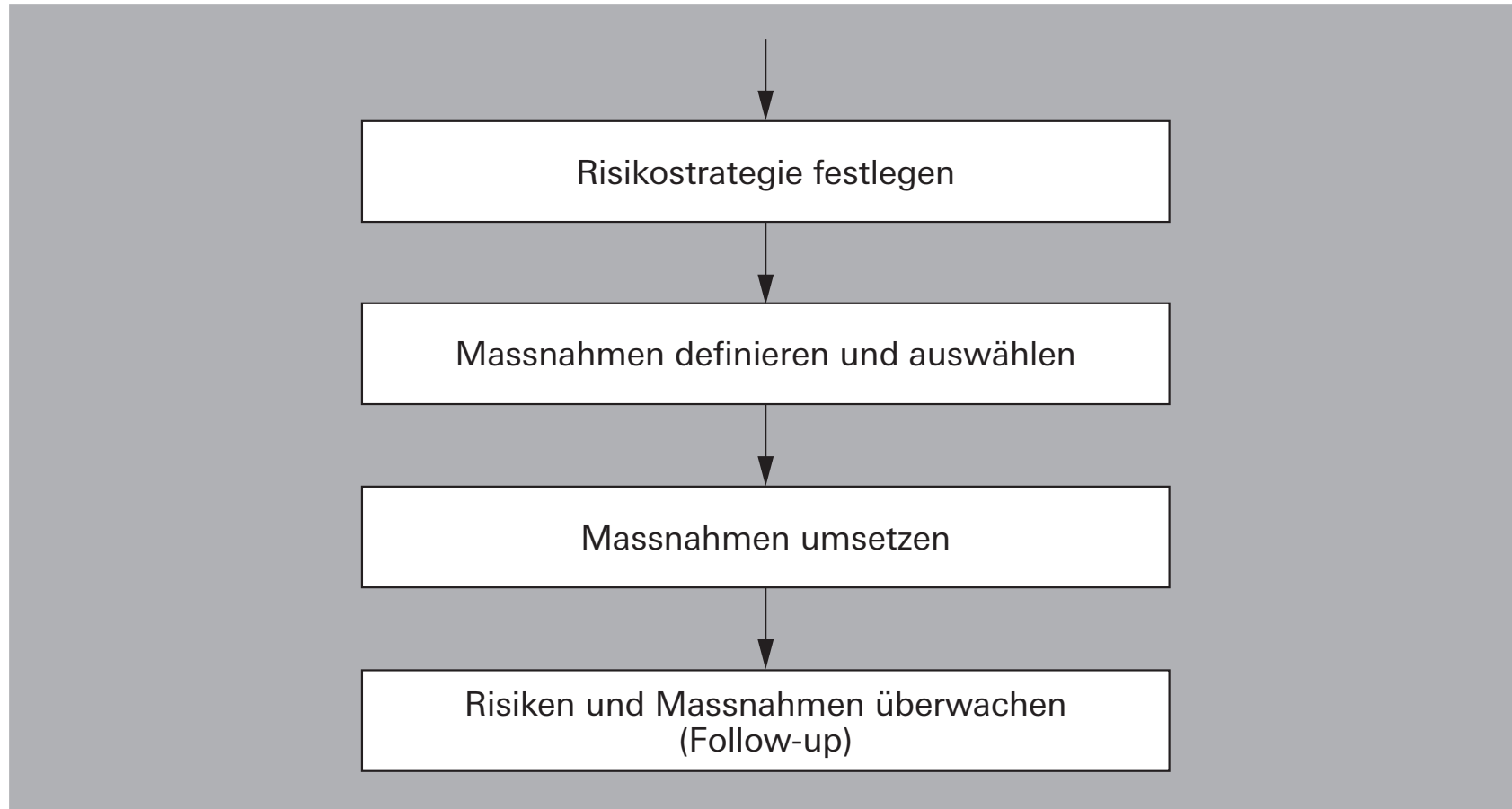
Legende:

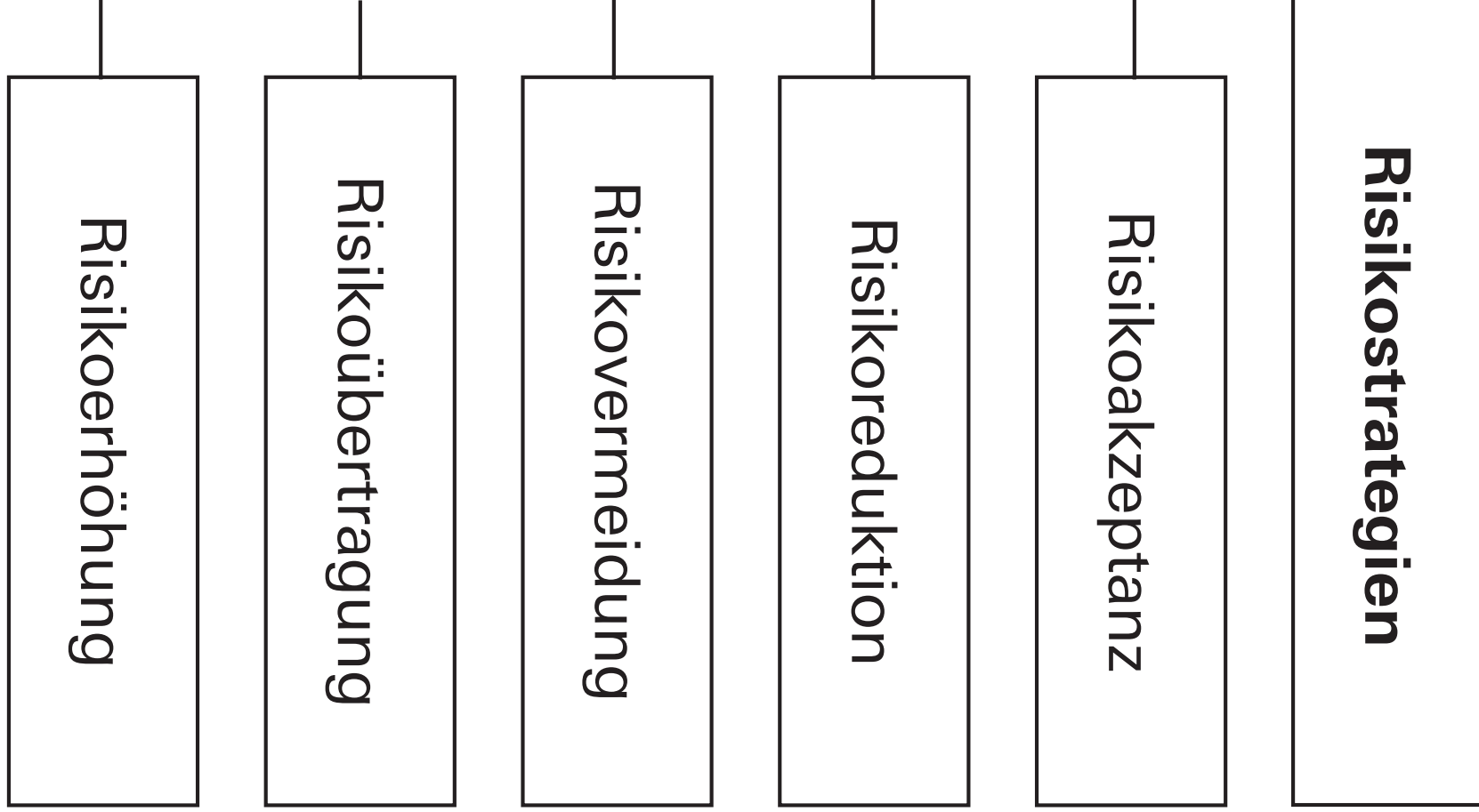
- = tiefe Priorität
- = mittlere Priorität
- = hohe Priorität
- = sehr hohe Priorität

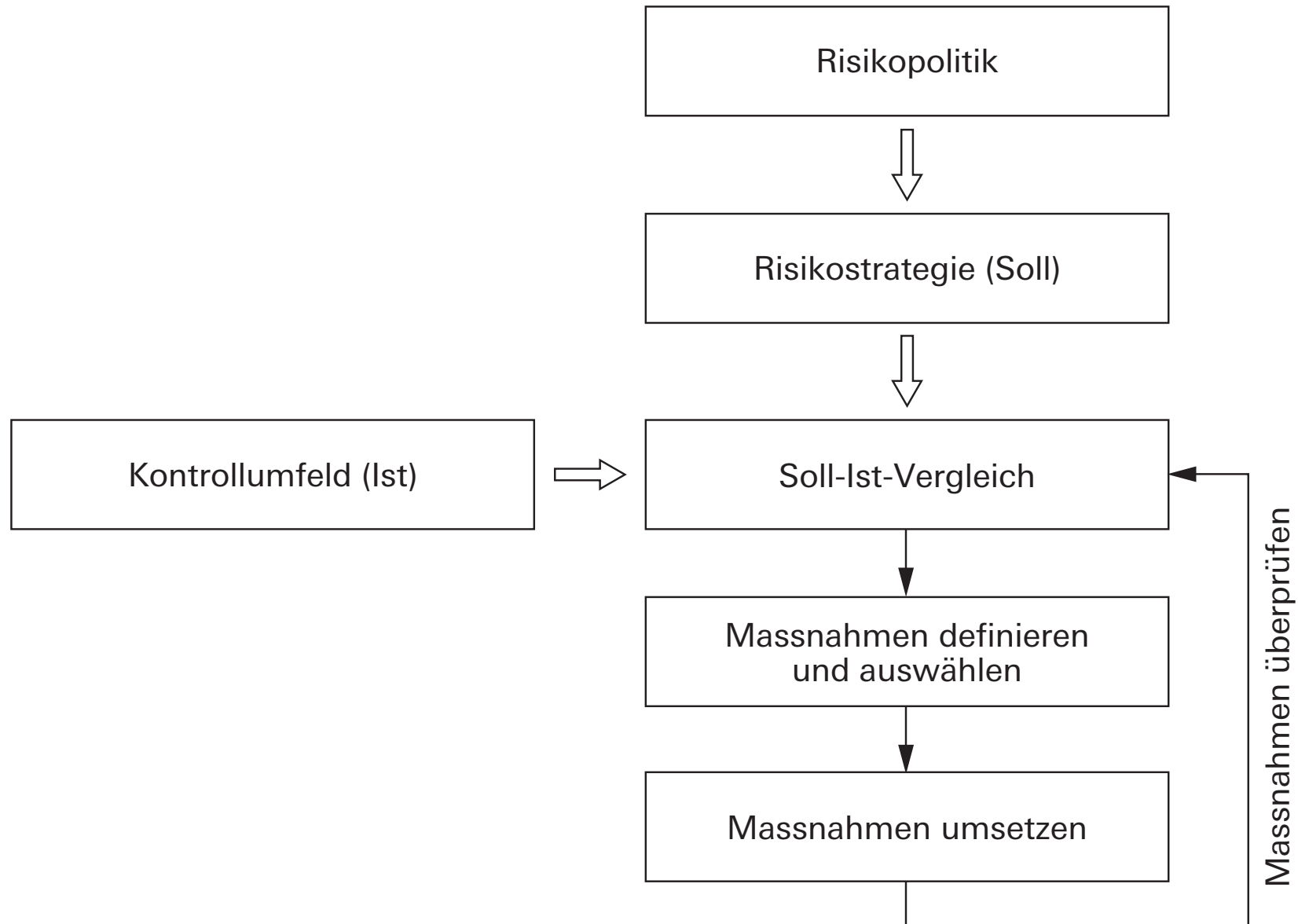


Legende:

- = geringes Risikoausmass
- = mittleres Risikoausmass
- = hohes Risikoausmass







Strategische Ebene

Unternehmensziele



Risikovision und
Risikokommission



Risikopolitik und
Risikostrategie



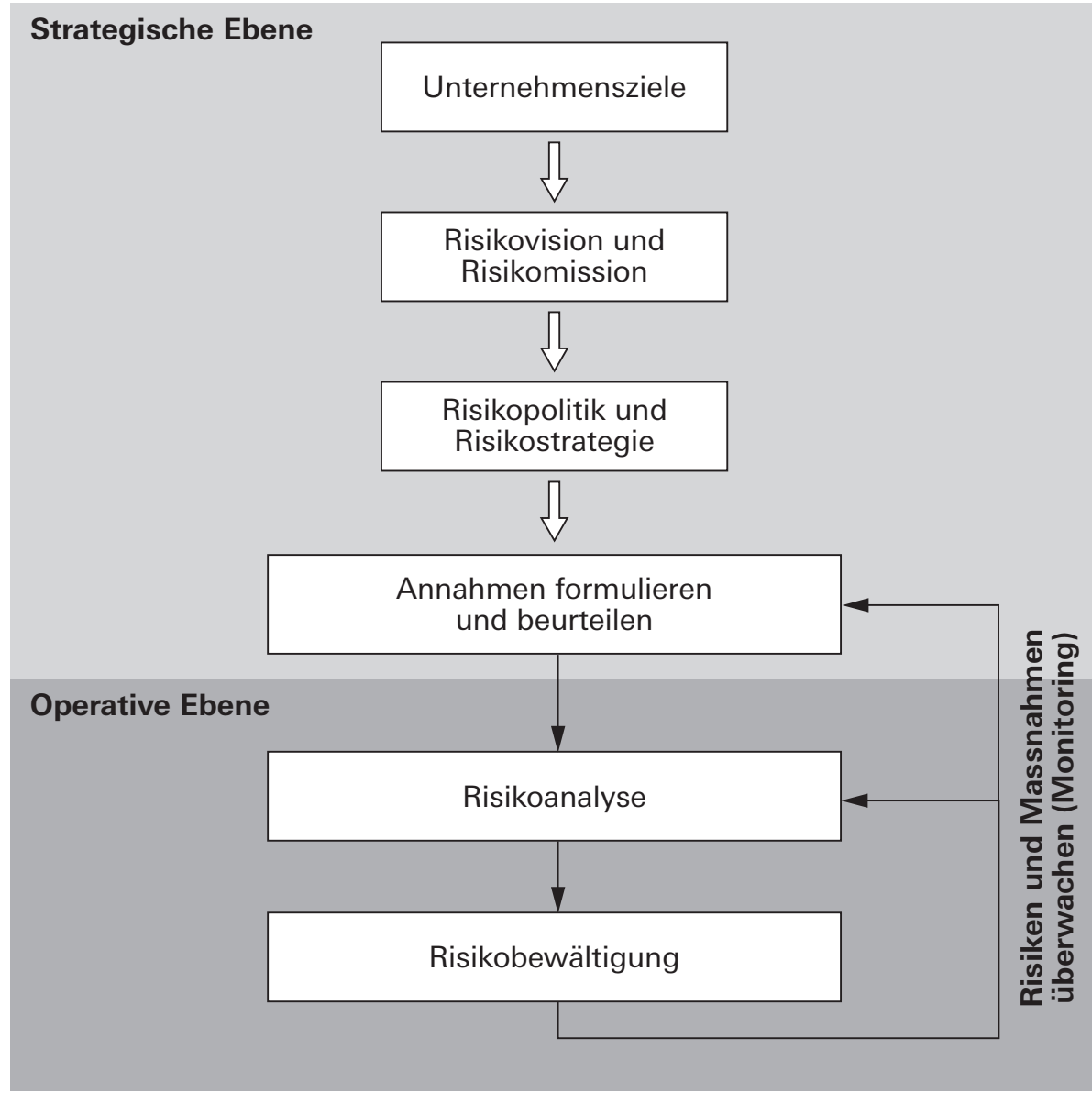
Annahmen formulieren
und beurteilen

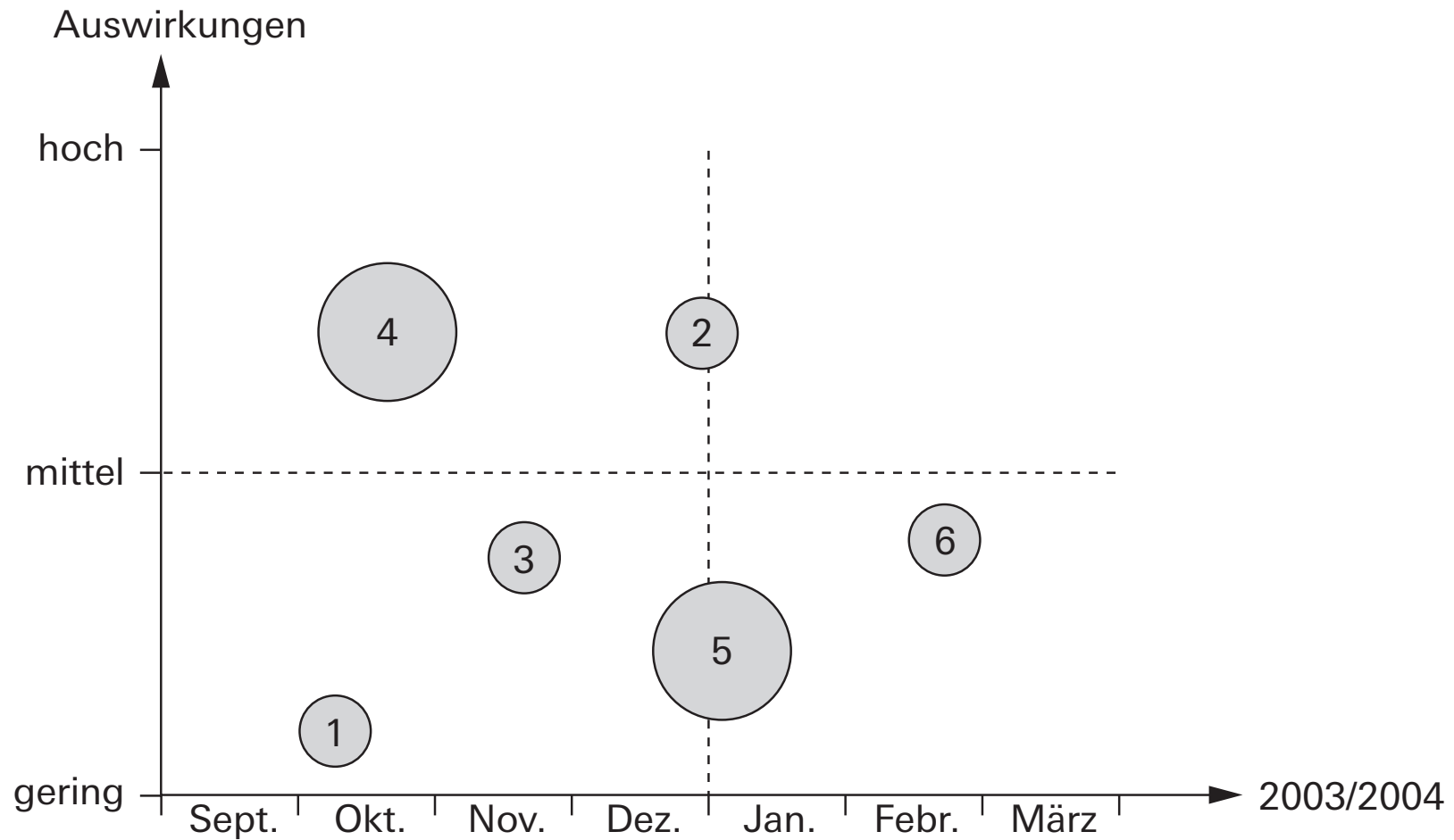
Operative Ebene

Risikoanalyse

Risikobewältigung

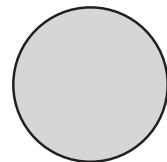
Risiken und Massnahmen
überwachen (Monitoring)





Legende:

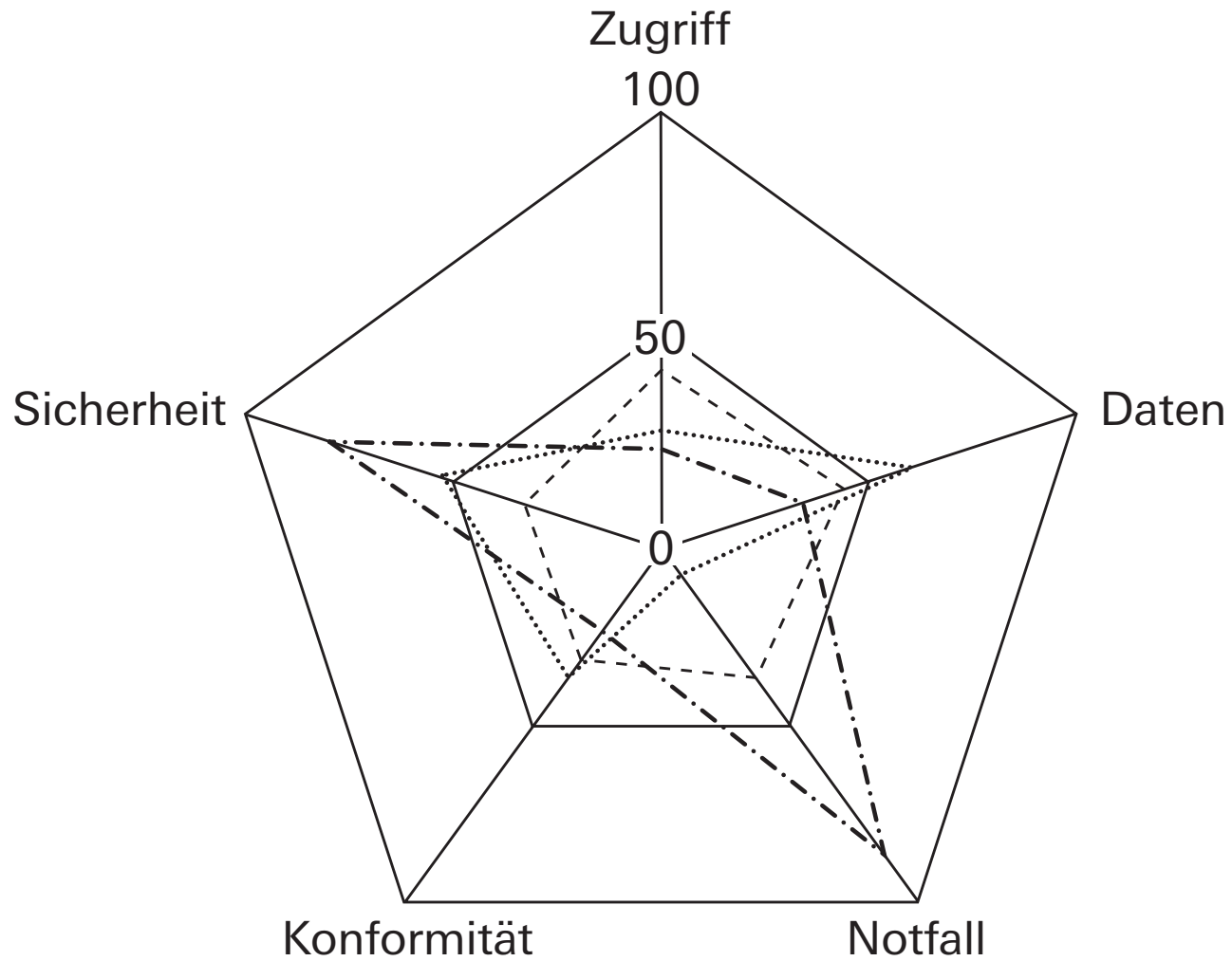
1-6 = Risiko-Nummer



hohe Komplexität



geringe Komplexität



Legende:

---- Italien

..... Schweiz

-.-.-.- Belgien

Risiken	Grün	Gelb	Rot
IT-Service	○	○	●
Projekt A	○	●	○
Projekt B	●	○	○
Projekt n	○	●	○

Legende:

- = keine Risiken
- (hell) = geringe Risiken (Folgen sind absehbar und tragbar)
- (dunkel) = bedeutende Risiken (Folgekosten bei Eintritt sind hoch)
- (schwarz) = kritische Risiken (Folgekosten bei Eintritt sind sehr hoch)

